

Community Consultative Committee – August 2024

14 August 2024



WELCOME AND APOLOGIES



Welcome

Apologies

Declaration of interests

Confirmation of previous minutes

AGENDA



- 1. Actions from previous meeting**
- 2. Correspondence**
- 3. Operational update**
- 4. Approvals**
- 5. Business Arising**
- 6. Environmental Incidents / Non-compliances**
- 7. Environmental Performance**
- 8. Community Complaints & Enquiries**
- 9. Environmental Projects**

ACTIONS / BUSINESS ARISING FROM PREVIOUS MINUTES



Action / Business Arising	Action Owner	Update
Nil	-	-

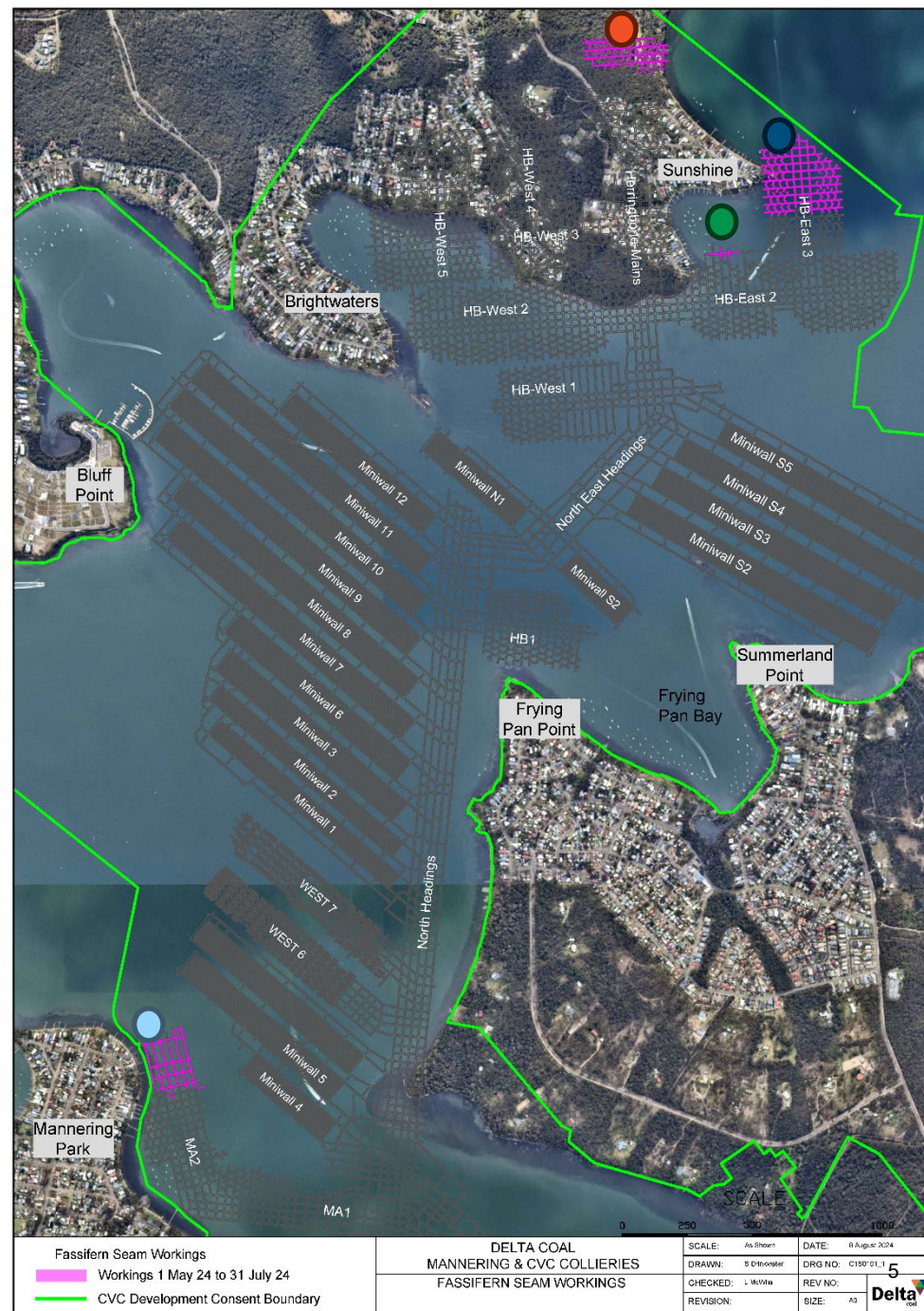
Correspondence since previous meeting

- Agenda issued by MMH to CCC members on 31 July 2024.
- Expression of interest raised by Laurie Williams on behalf of Tidy Towns Summerland point for Richard Miller to attend Delta Coal CCC meeting.

OPERATIONAL UPDATE

Production

- Production continues in HB-Mains
- Production in HB-East 3 Panel completed in reporting period.
- Production commenced in HB-East 4 Panel
- Production continues in MA2 panel.
- Production 1 May 2024 to 31 July 2024 was 279,419 t ROM Coal.
- All coal produced delivered to Power Station.



Current Approvals

Chain Valley Colliery

- EPL 1770: Environmental Protection License - October 2023
- CVC SSD-5465 (MOD 4): Development Consent – August 2021
- Extraction Plan: MWS5 and NPA – March 2021 (modification submitted in June 2024)

Mannering Colliery

- EPL 191 – Mannering Colliery – June 2023
- Mannering Colliery Project Approval PA 06_0311 (MOD 5) – June 2020

CONSENT CONSOLIDATION PROJECT

- 4th Request For Information in relation to subsidence modelling predictions received in July, response in mid-August.
- Some of the RFI's and Responses are publicly available on the Major Projects Planning Portal.
- As of 31 July 2024, no response received from the IEAPM for Delta Coals previous Greenhouse Gas submission to the IEAPMs Assessment.



State Significant Development

Assessment

Chain Valley Colliery Consolidation Project

Central Coast

Current Status: More Information Required

Interact with the stages for their names



Want to stay updated on this project?

Notify me

**Stay up to date with the project via
the Planning Portal at the link below**

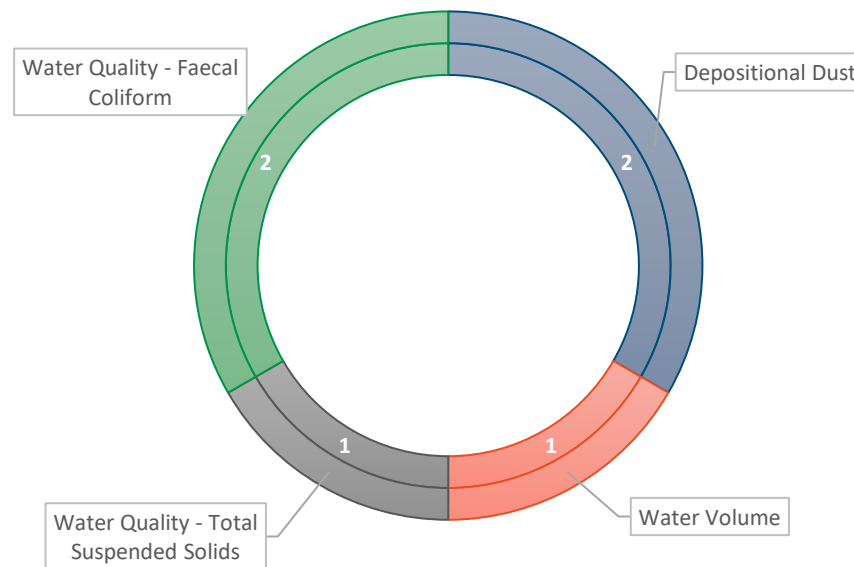
<https://www.planningportal.nsw.gov.au/major-projects/projects/chain-valley-colliery-consolidation-project>

ENVIRONMENTAL INCIDENTS / NON-COMPLIANCES



Summary of Incidents and Non-compliances

1 May - 31 July 2024
Environmental Incidents / Non-Compliance



ENVIRONMENTAL INCIDENTS / NON- COMPLIANCES

- CVC: 5 and 6 May 2024 – Faecal Coliform concentration at LDP27 (spillway) exceeded 200 mg/L EPL 1770 limit, results of 1,900 and 4,100 CFU/100ml respectively. A combined total Rainfall of 92 mm received on 5 and 6 May 2024. The source of Faecal Coliform bacteria was not considered to be related to on-site operations.
- CVC: May & July 2024 – Depositional dust exceeded the maximum monthly increase of +2 g/m²/month stipulated in Development Consent SSD-5465 at 'DDG004'. The annual average value remains below the 4 g/m²/month. Transgrid undertook clearing in the vicinity of the gauge for a transmission tower.



ENVIRONMENTAL INCIDENTS / NON- COMPLIANCES

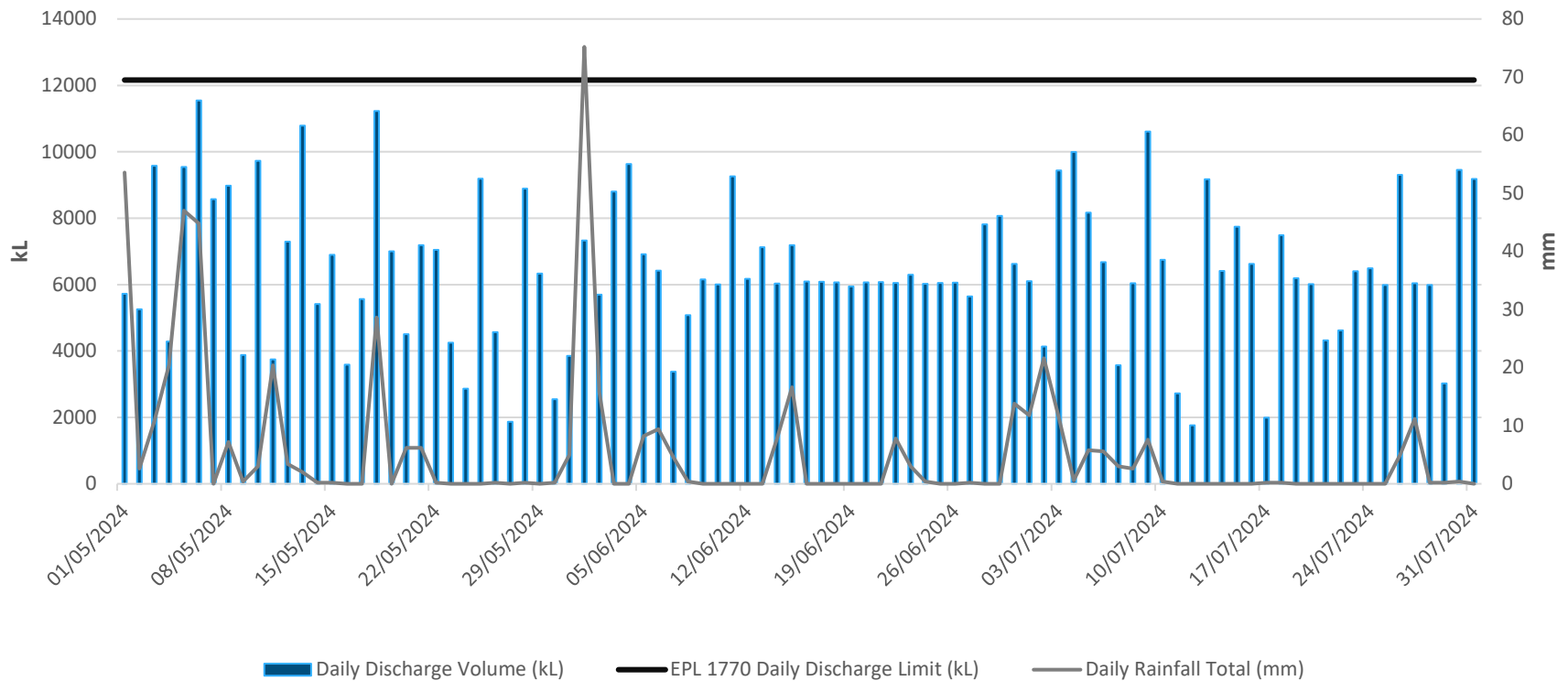


- MC: 3 May 2024 – Sample result of 169 mg/L exceeded the 50 mg/L EPL 191 limit at LDP1. Prior to the exceedance there was a series of high intensity rainfall events (120 mm in the three days preceding), reducing settlement time in the pond system. Following the incident improvements were made to the sites water management Trigger Action Response Plan (TARP).
- MC: 7 May 2024 – Volumetric limit exceedance at LDP 1 exceeded the EPL 191 limit of 4,000 kL. Daily discharge total of 4,382 kL. A total of 602 kL was discharged from underground workings on the day. As part of the corrective actions Delta Coal has updated the sites water Management TARP. Higher discharge volumes were associated with heavy rainfall.



CVC Surface Water Daily Discharge and Rainfall Volumes

CVC LDP1 Discharge
1 May - 31 July 2024



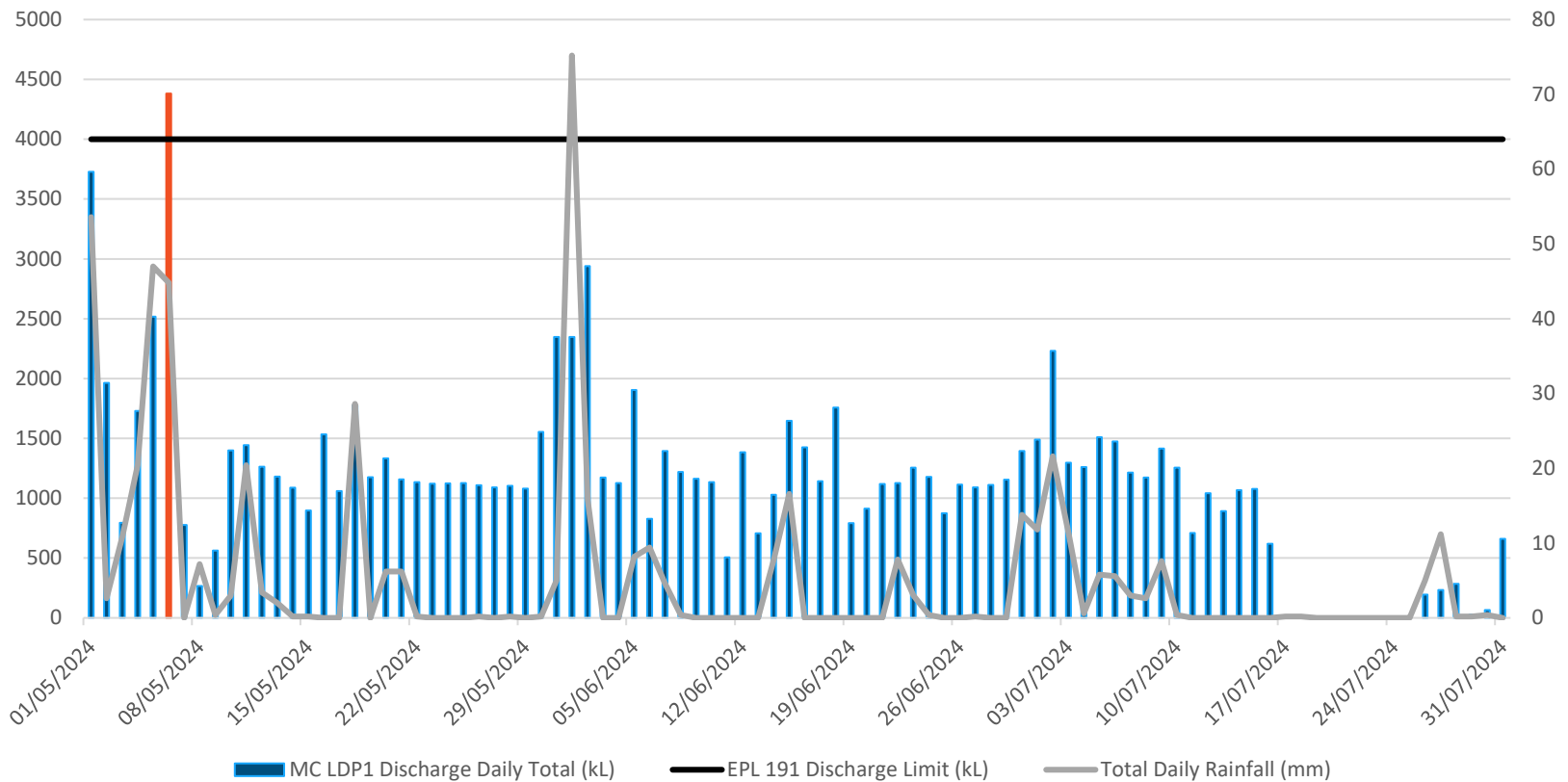
CVC Surface Routine Water Quality Monitoring (LDP1 Monthly)

LDP1	Limits	May – 2024	Jun – 2024	Jul - 2024
Faecal Coliforms (CFU/100ml)	200	71	66	200
Enterococcus CFU/100ml	40 Primary Contact (NHMRC, 2008 ¹) 150 Secondary Contact (NHMRC, 2008 ¹)	3	1	21
pH (pH Units)	6.5-8.5	7.69	7.71	7.77
Total Suspended Solids (mg/L)	50	5	15	17
Oil and Grease (mg/L)	10	<5	<5	<5

¹ National Health and Medical Research Council, *Guidelines for Managing Risks in Recreational Water*, 2008

MC Surface Water Daily Discharge Volume and Rainfall Volumes

MC LDP1 - Surface Water Daily Discharge
1 May 2024 - 31 July 2024



ENVIRONMENTAL PERFORMANCE

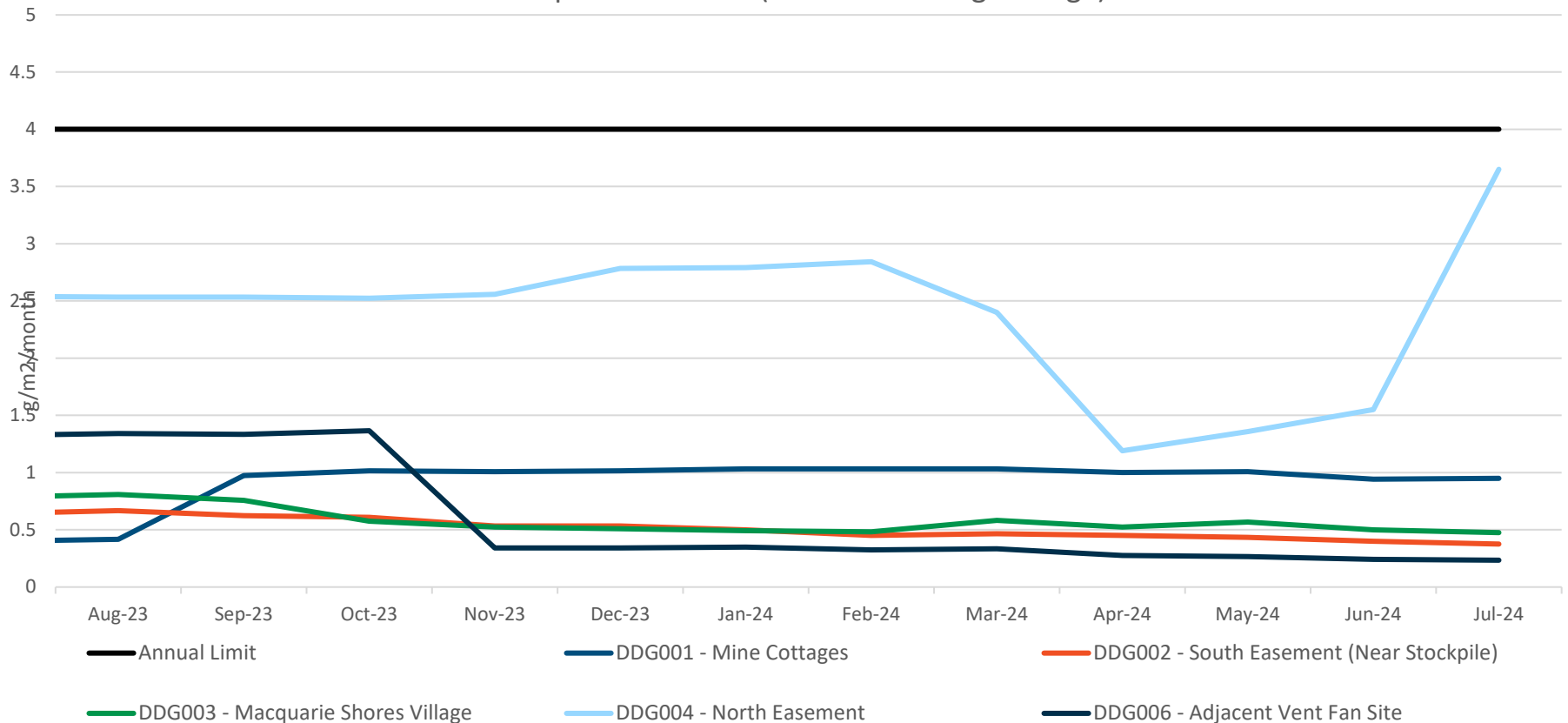


MC Surface Water Quality Monitoring

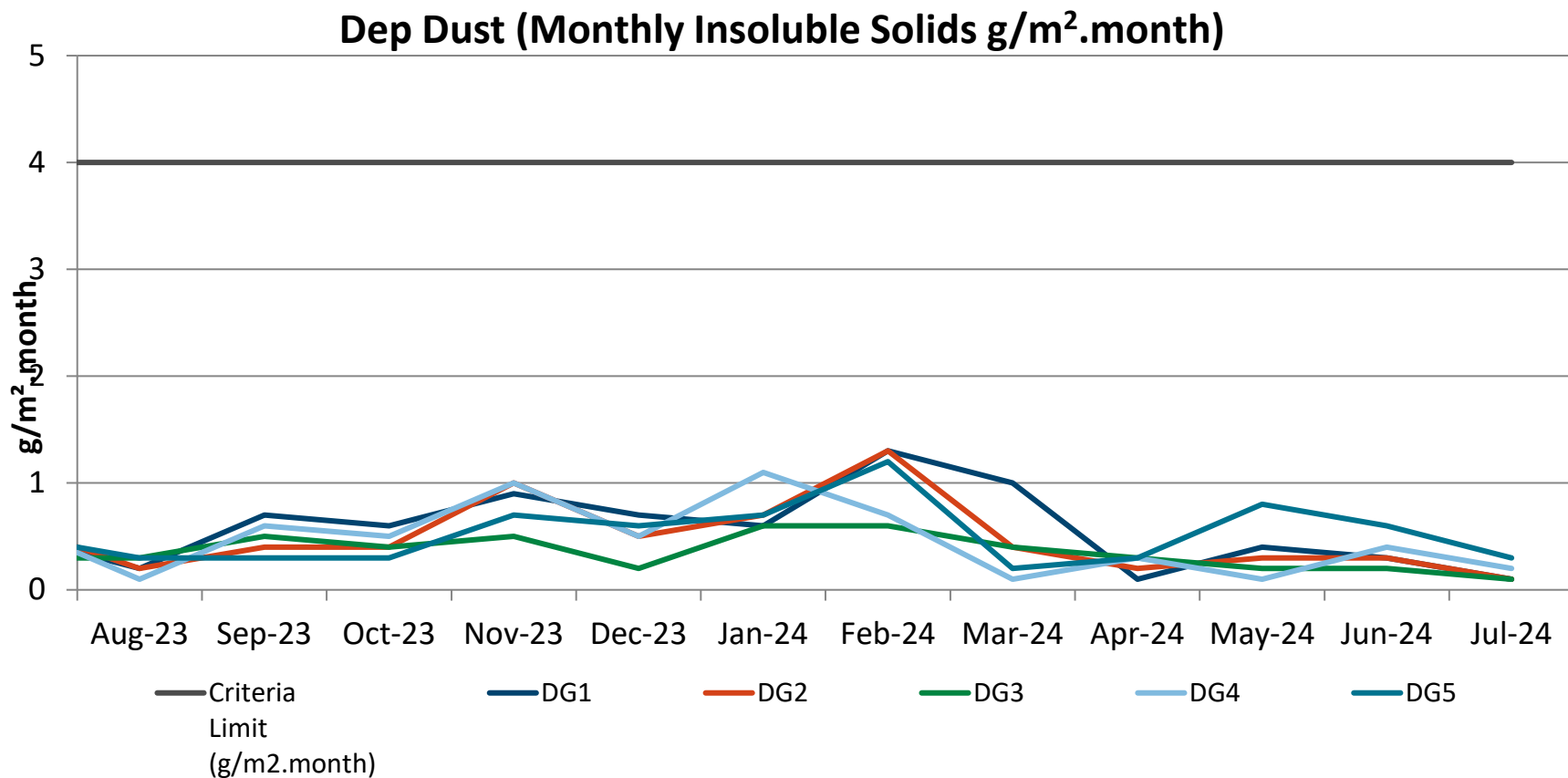
LDP1	Limits	May-2024 Average	Jun-2024 Average	Jul-2024 Average
Oil & Grease mg/L	10	<5	<5	<5
TSS mg/L	50	40.6	8.6	10
pH	6.5-8.5	7.80	7.80	7.91

CVC Depositional Dust Monitoring

CVC Depositional Dust (12 month rolling average)

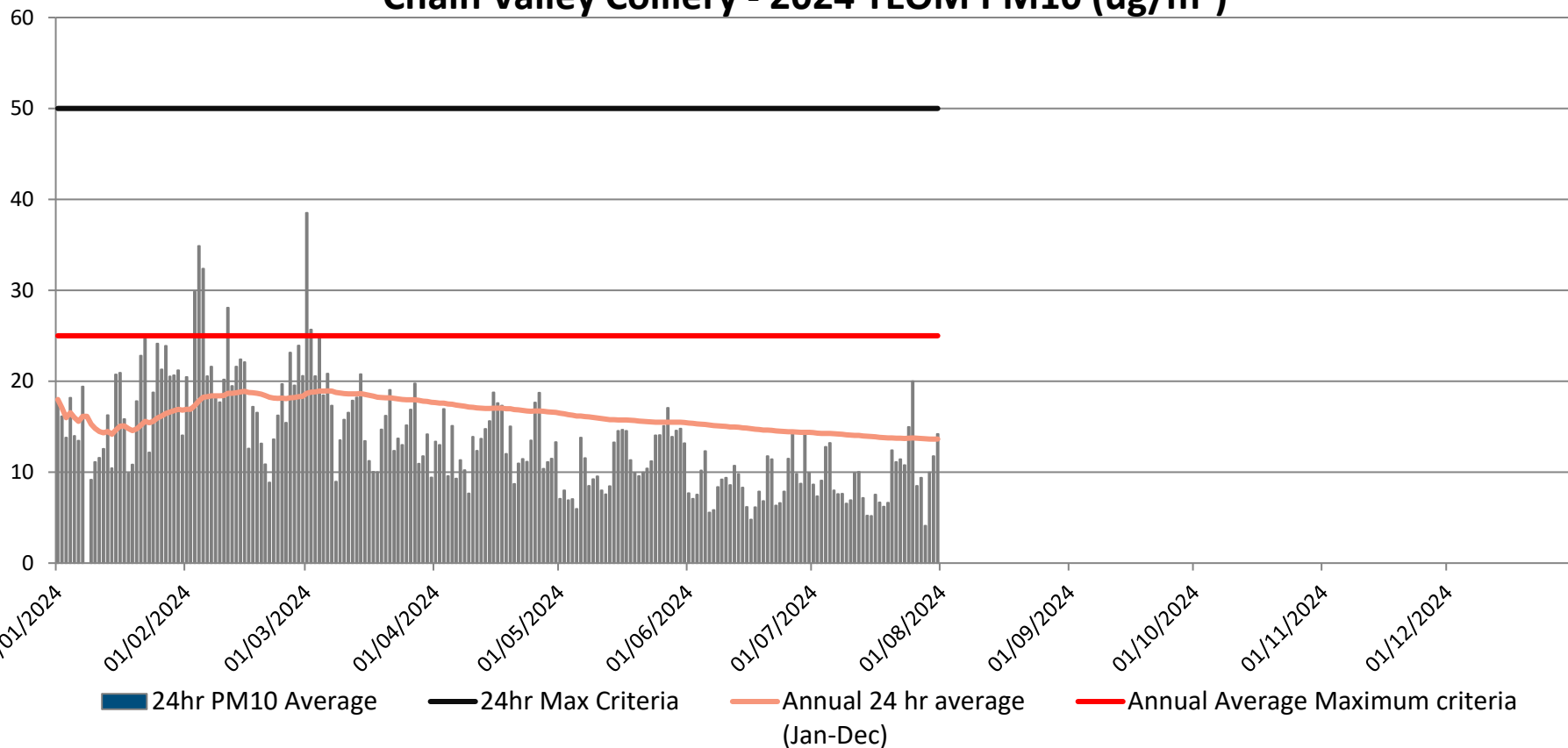


MC Depositional Dust Monitoring

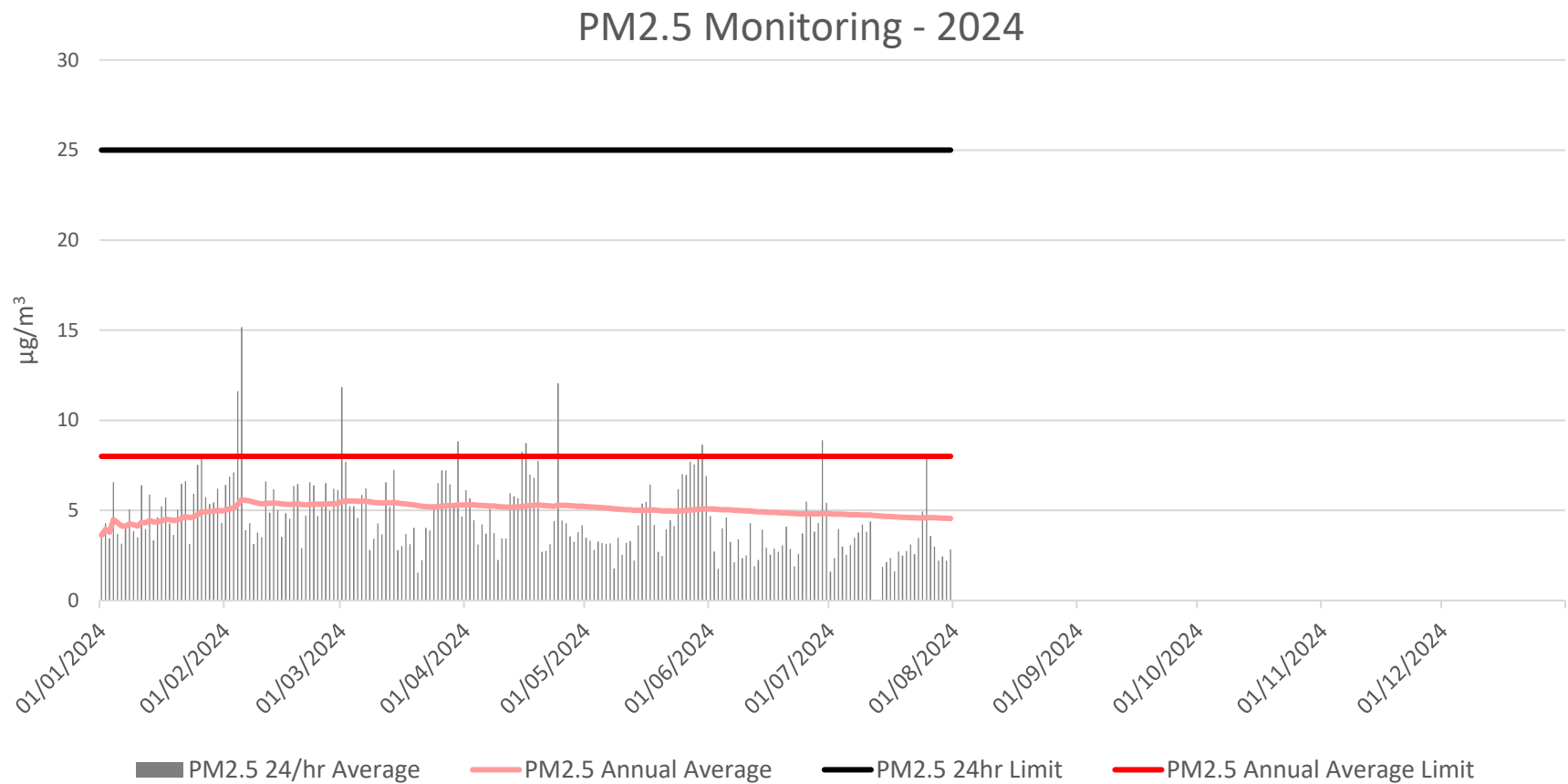


PM₁₀ Monitoring

Chain Valley Colliery - 2024 TEOM PM10 (ug/m³)



PM_{2.5} Monitoring

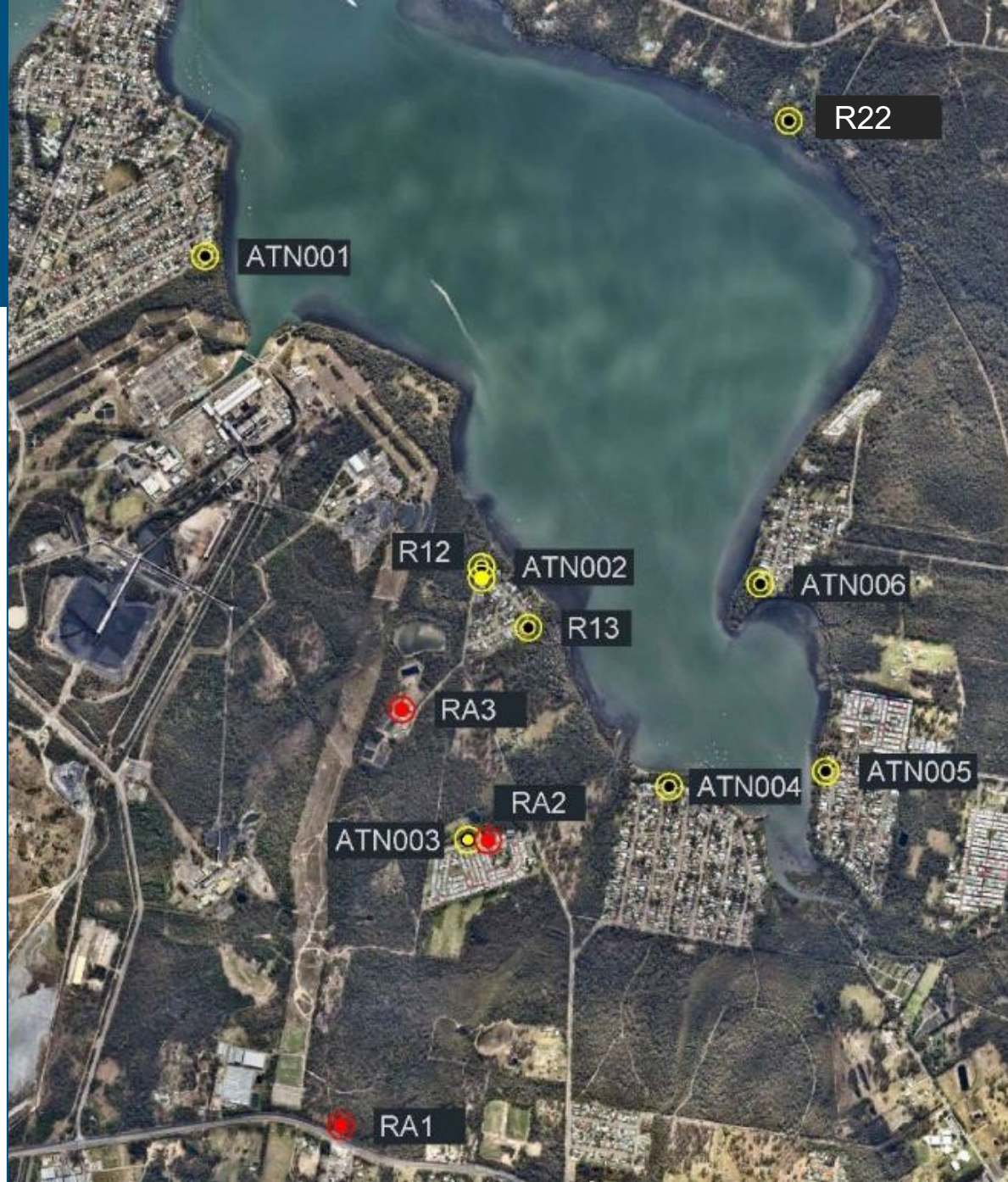


ENVIRONMENTAL PERFORMANCE

Noise Monitoring Locations

Red = MC
Monitoring Location

Yellow = CVC
Monitoring Location



ENVIRONMENTAL PERFORMANCE



Noise Monitoring – MC

No Exceedances for MC noise monitoring between May-July 2024.

Highest result recorded during monitoring for a location is presented. Monitoring in Evening (6-10pm) and Night period (10pm onward).
IA = Inaudible.

Location	Date	Site Contributions, dB		Noise Limits, dB		Compliance status
		LAEQ	LAMAX	LAEQ	LAMAX	
May 2024						
RA1	22/05/2024	IA	IA	36	46	☑
RA2		40	41	40	45	☑
RA3		<39	<39	39	49	☑
June 2024						
RA1	13/06/2024	IA	IA	36	46	☑
RA2		36	40	40	45	☑
RA3		37	40	39	49	☑
July 2024						
RA1	29/07/2024	IA	IA	36	46	☑
RA2		39	42	40	45	☑
RA3		<39	<39	39	49	☑

ENVIRONMENTAL PERFORMANCE



Noise Monitoring – CVC

Q2 2024 noise monitoring was undertaken on the 4, 7 and 13 June 2024.

The highest result for each monitoring location during the monitoring period is presented.

Monitoring Point	Site Contributions, dB		Noise Limit		Compliance Status
	LA _{EQ} (15 min)	LAMAX	LA _{EQ} (15 min)	LAMAX	
Chain Valley Colliery Q2 2024					
ATN001	IA	IA	38	45	☑
ATN002	IA	IA	49	54	☑
ATN003	IA	IA	36	45	☑
ATN004	IA	IA	35	45	☑
ATN005	IA	IA	35	45	☑
ATN006	IA	IA	37	45	☑
R22	45 (40+5 LFN)	42	46	46	☑
R12	IA	IA	49	53	☑
R13	IA	IA	43	49	☑

ENVIRONMENTAL PERFORMANCE

Annual Seagrass Monitoring June 2024

Monitoring includes surveying of sites including sites of potential impact and control sites (C1-C4).

Monitoring for 2024 did not identify impact to seagrass coverage and species diversity in the research area as a result of mining induced subsidence. There was a decrease from 2023 monitoring relating to decreased salinity (freshwater runoff) and sediment deposition (wind and wave action).

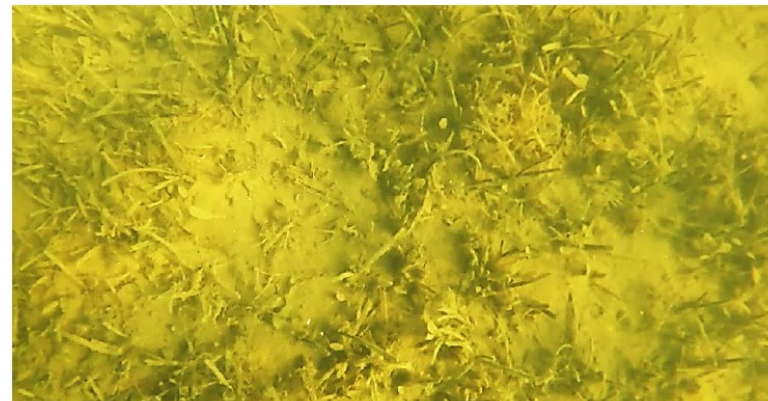


Plate 9.1 *Zostera capricorni* and *Halophilla ovalis* covered by fine sediment following strong southwesterly winds, June 2024.

Community Complaints between 1 May 2024 and 31 July 2024:

- Chain Valley Colliery - Nil community complaints received in period.
- Mannering Colliery - Nil community complaints received in period.

General Enquiries between 1 May 2024 and 31 July 2024 :

- No enquiries received

Questions?